

24^{27/32}
 5^{7/32} 1^{7/8} 5^{1/4} 1^{27/32} 1^{5/16} 1^{27/32} 1^{5/16} 1^{27/32} 1^{5/16} 1^{27/32} 1^{3/16}

5/8
 1^{27/32}
 5 1/4
 10^{3/16}
 1^{27/32}
 5/8

ROACH GEL BAIT
Maxforce
IMPACT
 BAYER

BAYER
Maxforce
IMPACT

ROACH GEL BAIT

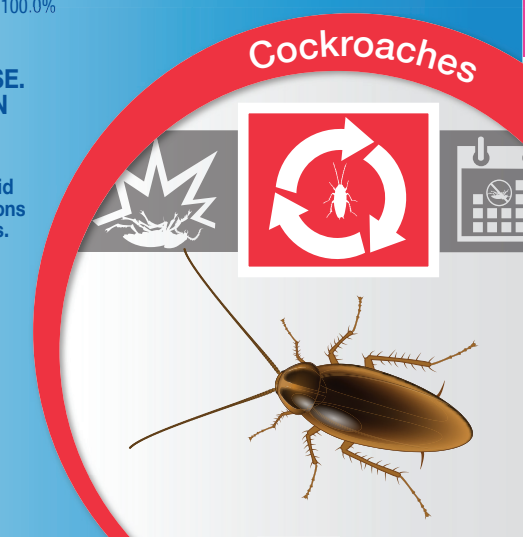
ACTIVE INGREDIENT: Clothianidin.....1.0%
 OTHER INGREDIENTS:.....99.0%
 TOTAL:.....100.0%
 EPA Reg. No. 432-1531
 EPA Est. No. 071106-GA-003

STOP - READ THE LABEL BEFORE USE.
KEEP OUT OF REACH OF CHILDREN
 For PRODUCT USE Information Call
 1-800-331-2867

See back and side panels for complete First Aid Instructions, Precautionary Statements, Directions for Use and Storage and Disposal Instructions.

Contains: 4 Reservoirs
 30g (1.05 Oz) each
 Total Net Weight
 120g (3.15 Oz)

80882068
 80894235A 140311AV1



ROACH GEL BAIT

ROACH GEL BAIT
Maxforce
IMPACT
 BAYER

BAYER

PRECAUTIONARY STATEMENTS
PHYSICAL & CHEMICAL HAZARDS
 Do not use this product in or on electrical equipment where a possibility of shock hazard exists.

DIRECTIONS FOR USE
 It is a violation of Federal Law to use this product in a manner inconsistent with its labeling.

Use this product for the control of cockroaches in areas where they are a problem: residences and institutional, warehousing and commercial establishments, including food service, food manufacturing and food processing facilities, stores, hospitals, schools, daycare centers, nursing homes, health care facilities, laboratories, computer and electronic equipment facilities, pet shops, zoos (indoor and / or crack and crevice treatment only), basements, basins, boats, trains, aircraft and sub-surface utility systems (steam / electric / gas / data tunnels, drainage systems and sanitary sewers) that are not storm or runoff drainage systems. May be used in both indoor and outdoor (adjacent to structures) environments.

USE DIRECTIONS
 Place bait into cracks and crevices or openings leading into voids, or make spot applications near harborage, aggregation, foraging / feeding areas.

Examples of locations for bait placement include: between different elements of construction; the hollow spaces in floors, walls, ceilings, or in equipment legs and bases; cracks and crevices around pipes, doors or windows, refrigerators, stoves, water heaters, dishwashers, and other equipment; behind or under baseboards, cupboards, cabinets, countertops, sinks; and, wherever cockroaches may be found hiding.

Numerous smaller placements will provide better control than fewer larger spots, especially for German cockroach control.

Application rates for all cockroaches: Application rate is dependent on level of infestation and species to be controlled. Apply gel as round spots or thin beads into cracks and crevices or as a dust in voids.

- For use in maintenance programs (regular (monthly, quarterly) applications are made for continuous control of cockroach populations, use 0.75 grams of bait per square yard.
- For light to moderate infestations (or for retreatments), use up to 1.5 grams of bait per square yard.
- To clean out severe or heavy infestations, use up to 3.0 grams of bait per square yard.

FOR OUTDOOR USE (adjacent to home or structure)
 Inject bait into cracks and crevices or expansion joints around windows and doors, porches, screens, eaves, sills, soffits, garages, under stairways and other areas adjacent to structures where cockroaches may find harborage.

USE RESTRICTIONS
 • Keep gel away from foods and food contact or preparation surfaces.
 • Do not apply to areas where food/feet, utensils, or processing surfaces may become contaminated.
 • USE ONLY IN AREAS NOT EASILY ACCESSIBLE TO CHILDREN, PETS, AND OTHER NON-TARGET ORGANISMS.

STORAGE AND DISPOSAL
 Do not contaminate water, food, or feed by storage or disposal.
PESTICIDE STORAGE: Store in a cool, dry area out of reach of children.
PESTICIDE DISPOSAL: If Empty: Do not reuse container. Place in trash or offer for recycling if available. If Partly Filled: Call your local solid waste agency for disposal instructions. Never place unused product down any indoor or outdoor drain.

If you have questions regarding the use of this product, please call 1-800-331-2867.

IMPORTANT: READ BEFORE USE
 Read the entire Directions for Use, Conditions, Disclaimer of Warranties and Limitations of Liability before using this product. If terms are not acceptable, return the unopened product container at once.

By using this product, user or buyer accepts the following Conditions, Disclaimer of Warranties and Limitations of Liability.

CONDITIONS: The directions for use of this product are believed to be adequate and consequences may result because of such factors as weather conditions, presence of other materials, or the manner of use or application, all of which are beyond the control of Bayer CropScience LP. All such risks shall be assumed by the user or buyer.

DISCLAIMER OF WARRANTIES: TO THE EXTENT CONSISTENT WITH APPLICABLE LAW, BAYER CROPSCIENCE LP MAKES NO OTHER WARRANTIES, EXPRESS OR IMPLIED, OF MERCHANTABILITY OR OF FITNESS FOR A PARTICULAR PURPOSE OR OTHERWISE, THAT EXTEND BEYOND THE STATEMENTS MADE ON THIS LABEL. No agent of Bayer CropScience LP is authorized to make any warranties beyond those contained herein or to modify the warranties contained herein. TO THE EXTENT CONSISTENT WITH APPLICABLE LAW, Bayer CropScience LP disclaims any liability whatsoever for special, incidental or consequential damages resulting from the use or handling of this product.

LIMITATIONS OF LIABILITY: TO THE EXTENT CONSISTENT WITH APPLICABLE LAW, THE DAMAGES RESULTING FROM THE USE OR HANDLING OF THIS PRODUCT, WHETHER IN CONTRACT, WARRANTY, TORT, NEGLIGENCE, STRICT LIABILITY OR OTHERWISE, SHALL NOT EXCEED THE PURCHASE PRICE PAID, OR AT BAYER CROPSCIENCE LP'S ELECTION, THE REPLACEMENT OF PRODUCT.

BAIT QUANTITY REFERENCE TABLE

Approximate weight per spot diameter	Approximate weight per bead length
0.1 gram = Pico size spot	0.25 gram = 1.5 inch bead
1.0 gram = Dime size spot	0.5 gram = 3.0 inch bead
1.5 gram = Quarter size spot	1.0 gram = 6 inch bead

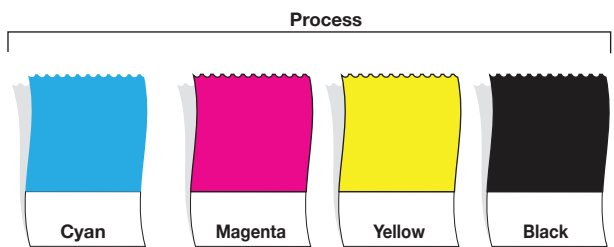
APPLICATIONS IN FOOD/FEED HANDLING ESTABLISHMENTS
 Application within food/feed areas of food/feed handling establishments is limited to crack and crevice treatment only. Care should be taken to avoid depositing gel onto exposed surfaces; if gel contacts an exposed surface where food is handled, remove gel and wash exposed surface followed by a potable water rinse.

Food/feed areas include areas for receiving, storage, packing (canning, bottling, wrapping, baling), preparing, edible waste storage, and enclosed processing systems (mills, chutes, edible oils, presses). Serving areas are also considered a food/feed area when food is exposed and facility is in operation. Application of this product in food/feed areas of food/feed handling establishments other than as a crack and crevice treatment is not permitted.



Bayer (reg. ®), the Bayer Cross (reg. ®), Maxforce® and Impact™ are trademarks of Bayer.

Produced for:
 Bayer Environmental Science
 A Division of Bayer CropScience LP
 2 T. W. Alexander Drive
 Research Triangle Park, NC 27709
 Product of Germany





Maxforce[®]

IMPACT[™]

ROACH GEL BAIT

ACTIVE INGREDIENT: Clothianidin.....1.0%
OTHER INGREDIENTS:.....99.0%
TOTAL: 100.0%

EPA Reg. No. 432-1531
EPA Est. No. 071106-GA-003

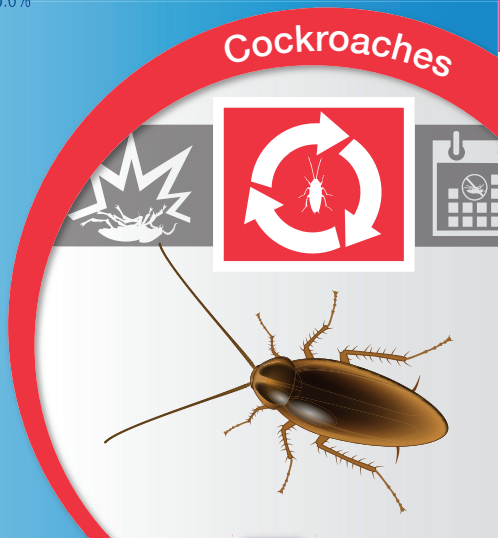
**STOP - READ THE LABEL BEFORE USE.
KEEP OUT OF REACH OF CHILDREN**

For PRODUCT USE Information Call
1-800-331-2867

See back and side panels for complete First Aid
Instructions, Precautionary Statements, Directions
for Use and Storage and Disposal Instructions.

Contains: 4 Reservoirs
30g (1.05 Oz) each
Total Net Weight
120g (3.15 Oz)

80882068
80894235A 140311AV1



PRECAUTIONARY STATEMENTS

PHYSICAL & CHEMICAL HAZARDS

Do not use this product in or on electrical equipment where a possibility of shock hazard exists.

DIRECTIONS FOR USE

It is a violation of Federal Law to use this product in a manner inconsistent with its labeling.

Use this product for the control of cockroaches in areas where they are a problem: residences and institutional, warehousing and commercial establishments, including food service, food manufacturing and food processing facilities, stores, hospitals, schools, daycare centers, nursing homes, health care facilities, laboratories, computer and electronic equipment facilities, pet shops, zoos (indoor and / or crack and crevice treatment only), basements, buses, boats, trains, aircraft and sub-surface utility systems (steam / electric / gas / data tunnels, drainage systems and sanitary sewers) that are not storm or runoff drainage systems. May be used in both indoor and outdoor (adjacent to structures) environments.

USE DIRECTIONS

Place bait into cracks and crevices or openings leading into voids, or make spot applications near harborage, aggregation, foraging / feeding areas.

Examples of locations for bait placement include: between different elements of construction; the hollow spaces in floors, walls, ceilings, or in equipment legs and bases; cracks and crevices around pipes, doors or windows, refrigerators, stoves, water heaters, dishwashers, and other equipment; behind or under baseboards, cupboards, cabinets, countertops, sinks; and, wherever cockroaches may be found hiding.

Numerous smaller placements will provide faster control than fewer larger spots, especially for German cockroach control.

Application rates for all cockroaches: Application rate is dependent on level of infestation and species to be controlled. Apply gel as round spots or thin beads into cracks and crevices or as a spot treatment.

- For use in **maintenance programs** where regular (monthly, quarterly) applications are made for continuous control of cockroach populations, use 0.75 grams of bait per square yard.
- For **light to moderate infestations** (or for retreatments), use up to 1.5 grams of bait per square yard.
- To **clean out severe or heavy infestations**, use up to 3.0 grams of bait per square yard.

BAIT QUANTITY REFERENCE TABLE

Approximate weight per spot diameter	Approximate weight per bead length
0.1 gram = Pea size spot	0.25 gram = 1.5 inch bead
1.0 gram = Dime size spot	0.5 gram = 3.0 inch bead
1.5 gram = Quarter size spot	1.0 gram = 6 inch bead

APPLICATIONS IN FOOD/FEED HANDLING ESTABLISHMENTS

Application within food/feed areas of food/feed handling establishments is limited to crack and crevice treatment only. Care should be taken to avoid depositing gel onto exposed surfaces; if gel contacts an exposed surface where food is handled, remove gel and wash exposed surface followed by a potable water rinse.

Food/feed areas include areas for receiving, storage, packing (canning, bottling, wrapping, boxing), preparing, edible waste storage, and enclosed processing systems (mills, dairies, edible oils, syrups). Serving areas are also considered a food/feed area when food is exposed and facility is in operation. **Application of this product in food/feed areas of food/feed handling establishments other than as a crack and crevice treatment is not permitted.**

FOR OUTDOOR USE (adjacent to home or structure)

Inject bait into cracks and crevices or expansion joints around windows and doors, porches, screens, eaves, sills, patios, garages, under stairways and other areas adjacent to structures where cockroaches may find harborage.

USE RESTRICTIONS

- Keep gel away from foods and food contact or preparation surfaces.
- Do not apply to areas where food/feed, utensils, or processing surfaces may become contaminated.
- **USE ONLY IN AREAS NOT EASILY ACCESSIBLE TO CHILDREN, PETS, AND OTHER NON-TARGET ORGANISMS.**

STORAGE AND DISPOSAL

Do not contaminate water, food, or feed by storage or disposal.

PESTICIDE STORAGE: Store in a cool, dry area out of reach of children.

PESTICIDE DISPOSAL: If Empty: Do not reuse container. Place in trash or offer for recycling if available. If Partly Filled: Call your local solid waste agency for disposal instructions. Never place unused product down any indoor or outdoor drain.

If you have questions regarding the use of this product, please call 1-800-331-2867.

IMPORTANT: READ BEFORE USE

Read the entire Directions for Use, Conditions, Disclaimer of Warranties and Limitations of Liability before using this product. If terms are not acceptable, return the unopened product container at once.

By using this product, user or buyer accepts the following Conditions, Disclaimer of Warranties and Limitations of Liability.

CONDITIONS: The directions for use of this product are believed to be adequate and must be followed carefully. However, it is impossible to eliminate all risks associated with the use of this product. Plant injury, ineffectiveness or other unintended consequences may result because of such factors as weather conditions, presence of other materials, or the manner of use or application, all of which are beyond the control of Bayer CropScience LP. All such risks shall be assumed by the user or buyer.

DISCLAIMER OF WARRANTIES: TO THE EXTENT CONSISTENT WITH APPLICABLE LAW, BAYER CROPSCIENCE LP, MAKES NO OTHER WARRANTIES, EXPRESS OR IMPLIED, OF MERCHANTABILITY OR OF FITNESS FOR A PARTICULAR PURPOSE OR OTHERWISE, THAT EXTEND BEYOND THE STATEMENTS MADE ON THIS LABEL. NO AGENT OF Bayer CropScience LP is authorized to make any warranties beyond those contained herein or to modify the warranties contained herein. TO THE EXTENT CONSISTENT WITH APPLICABLE LAW, Bayer CropScience LP disclaims any liability whatsoever for special, incidental or consequential damages resulting from the use or handling of this product.

LIMITATIONS OF LIABILITY: TO THE EXTENT CONSISTENT WITH APPLICABLE LAW, THE EXCLUSIVE REMEDY OF THE USER OR BUYER FOR ANY AND ALL LOSSES, INJURIES OR DAMAGES RESULTING FROM THE USE OR HANDLING OF THIS PRODUCT, WHETHER IN CONTRACT, WARRANTY, TORT, NEGLIGENCE, STRICT LIABILITY OR OTHERWISE, SHALL NOT EXCEED THE PURCHASE PRICE PAID, OR AT BAYER CROPSCIENCE LP'S ELECTION, THE REPLACEMENT OF PRODUCT.

Bayer (reg'd), the Bayer Cross (reg'd), Maxforce® and Impact™ are trademarks of Bayer.

Produced for:

Bayer Environmental Science
A Division of Bayer CropScience LP
2 T. W. Alexander Drive
Research Triangle Park, NC 27709
Product of Germany

Bayer



Maxforce[®]
IMPACT[™]

ROACH GEL BAIT



**CARTON MADE FROM 100%
RECYCLED PAPERBOARD MINIMUM
35% POST CONSUMER CONTENT**



(01)00785740232262